

PREE Laboratories - South
545 SW 2nd St, #202, Corvallis, OR 97333
541-257-5002 / OLCC 010-10087092BDA / www.PREElab.com

Enhanced Tincture

Confident Cannabis ID:

Sample ID: C251181-01

Matrix: Cannabinoid Product (liquid)

METRC Batch #:

Sampling Method/SOP: FSOP #101

Date Sampled: NA

Date Accepted: 10/16/25

Harvest/Process Lot ID:

Batch ID:

Batch Size (g):

Unit for Sale:

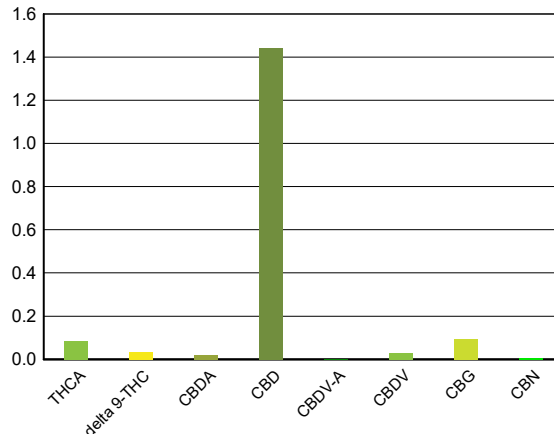
Harvest/Production Date:

Cannabinoid Analysis

Date/Time Extracted: 10/20/25 08:07
Date/Time Analyzed: 10/23/25 12:18

Analysis Method/SOP: LSOP #303
Sample mass: 1.09g/

Cannabinoids	LOQ(%)	mg/g	mg/mL	Cannabinoid Profile
Total THC ((THCA*0.877)+Δ9THC)		1.10	1.20	
Total CBD ((CBDA*0.877)+CBD)		14.60	15.91	
THCA	0.010	0.85	0.93	
delta 9-THC	0.010	0.35	0.38	
delta 8-THC	0.010	< LOQ	< LOQ	
THCV	0.010	< LOQ	< LOQ	
CBGA	0.010	< LOQ	< LOQ	
CBDA	0.010	0.19	0.21	
CBD	0.010	14.40	15.70	
CBDV	0.010	0.29	0.32	
CBN	0.010	< LOQ	< LOQ	
CBG	0.010	0.96	1.05	
CBC	0.010	< LOQ	< LOQ	
CBDV-A	0.010	< LOQ	< LOQ	
CBL	0.010	< LOQ	< LOQ	
Sum of tested Cannabinoids	0.010	17.10	18.64	



"Total THC" and "Total CBD" are calculated values and are an Oregon reporting requirement (OAR 333-064-0100). For Cannabinoid analysis, only delta 9-THC, delta 8-THC, THCA, CBD and CBDA are ORELAP accredited analytes. Cannabinoid values reported for plant matter are dry weight corrected; Oregon Water Activity action level is 0.65Aw and Oregon Moisture Content action level is 15%. Samples above limit will be highlighted RED; FD = Field Duplicate; LOQ = Limit of Quantitation.

Brad Johnson
Laboratory Manager - 10/23/2025

Page 1 of 6

PREE Laboratories - South
545 SW 2nd St, #202, Corvallis, OR 97333
541-257-5002 / OLCC 010-10087092BDA / www.PREElab.com

FOR INFORMATIONAL USE ONLY - NOT FOR REGULATORY PURPOSES

Enhanced Tincture

Date Sampled: NA

Date Accepted: 10/16/25

Batch ID:

Batch Size:

Sampling Method/SOP: Client

Sample ID: C251181-01

METRC Batch #:

Matrix: Cannabinoid Product

Microbial Analysis

Date/Time Extracted: 10/20/25 08:09

Date/Time Analyzed: 10/21/2025 1:13:11PM

Analysis Method/SOP: LSOP #310

Sample extracted and analyzed at PREE Lab - South

Analyte	Result	Units	Pass/Fail
Salmonella spp.	Absent	/g	PASS
STEC E. coli	Absent	/g	PASS

Analytical instrumentation: Thomas Scientific Applied Biosystem qPCR located at PREE Lab - South



Brad Johnson
Laboratory Manager - 10/23/2025

Page 2 of 6

PREE Laboratories - South
545 SW 2nd St, #202, Corvallis, OR 97333
541-257-5002 / OLCC 010-10087092BDA / www.PREElab.com
FOR INFORMATIONAL USE ONLY - NOT FOR REGULATORY PURPOSES

Enhanced Tincture

Sample ID: C251181-01

METRC Batch #:

Matrix: Cannabinoid Product

Date Sampled: NA

Date Accepted: 10/16/25

Batch ID:

Batch Size:

Sampling Method/SOP: Client

Heavy Metals Analysis

Date Extracted: 10/20/25

Date Analyzed: 10/21/25

Analysis Method/SOP: LSOP #309

Sample extracted and analyzed at PREE Lab - South

Analyte	LOQ (ug/g)	Action Level (ug/g)	Result (ug/g)
Mercury	0.0500	0.1	ND
Lead	0.250	0.5	ND
Cadmium	0.100	0.2	ND
Arsenic	0.100	0.2	ND

LOQ= Limit of Quantitation; ND= Not Detected;
The reported result is based on sample weight for this sample;
Analytical instrumentation: Agilent 7850 ICP-MS located at PREE Lab - South



Brad Johnson
Laboratory Manager - 10/23/2025

Page 3 of 6

PREE Laboratories - South
545 SW 2nd St, #202, Corvallis, OR 97333
541-257-5002 / OLCC 010-10087092BDA / www.PREElab.com

FOR INFORMATIONAL USE ONLY - NOT FOR REGULATORY PURPOSES

Enhanced Tincture

Sample ID: C251181-01

METRC Batch #:

Matrix: Cannabinoid Product

Date Sampled: NA

Date Accepted: 10/16/25

Batch ID:

Batch Size:

Sampling Method/SOP: Client

Mycotoxins

Date Extracted: 10/20/25

Date Analyzed: 10/20/25

Analysis Method/SOP: LSOP #308

Sample extracted and analyzed at PREE Lab - South

Analyte	LOQ (ppb)	Action Level	Result (ppb)
Total Aflatoxins	0.0100	20	ND
Ochratoxin A	0.0100	20	ND
Aflatoxin G2	0.0100	20	ND
Aflatoxin G1	0.0100	20	ND
Aflatoxin B2	0.0100	20	ND
Aflatoxin B1	0.0100	20	ND

LOQ= Limit of Quantitation; ND= Not Detected;
The reported result is based on sample weight for this sample;
Analytical instrumentation: Sciex Triple Quad 6500



Brad Johnson
Laboratory Manager - 10/23/2025

Page 4 of 6

PREE Laboratories - South
545 SW 2nd St, #202, Corvallis, OR 97333
541-257-5002 / OLCC 010-10087092BDA / www.PREElab.com

Quality Control

Batch: C25J011 - LSOP #310 Microbial Analysis

Blank(C25J011-BLK1)			Extracted: 10/20/25 08:09			Analyzed: 10/21/25 13:13		
Analyte	Result	LOQ	Recovery Limits	Notes	Analyte	Result	LOQ	Recovery Limits
STEC E. coli	Absent	0.500 (g/g)	< LOQ		Salmonella spp.	Absent	0.500 (g/g)	< LOQ

Reference(C25J011-SRM1)			Extracted: 10/20/25 08:09			Analyzed: 10/21/25 13:13		
Analyte	Result	LOQ	Recovery Limits	Notes	Analyte	Result	LOQ	Recovery Limits
STEC E. coli	Present	(g/g)	0-200		Salmonella spp.	Present	(g/g)	0-200

Batch: C25J012 - LSOP #309 Heavy Metal Quantification

Blank(C25J012-BLK1)			Extracted: 10/20/25 08:10			Analyzed: 10/21/25 12:27		
Analyte	Result	LOQ	Recovery Limits	Notes	Analyte	Result	LOQ	Recovery Limits
Arsenic	< LOQ	0.100 (ug/g)	< LOQ		Lead	< LOQ	0.250 (ug/g)	< LOQ
Mercury	< LOQ	0.0500 (ug/g)	< LOQ		Cadmium	< LOQ	0.100 (ug/g)	< LOQ

Blank(C25J012-BLK2)			Extracted: 10/20/25 08:10			Analyzed: 10/21/25 12:32		
Analyte	Result	LOQ	Recovery Limits	Notes	Analyte	Result	LOQ	Recovery Limits
Arsenic	< LOQ	0.100 (ug/g)	< LOQ		Lead	< LOQ	0.250 (ug/g)	< LOQ
Mercury	< LOQ	0.0500 (ug/g)	< LOQ		Cadmium	< LOQ	0.100 (ug/g)	< LOQ

LCS(C25J012-BS1)			Extracted: 10/20/25 08:10			Analyzed: 10/21/25 12:36		
Analyte	% Recovery	LOQ	Recovery Limits	Notes	Analyte	% Recovery	LOQ	Recovery Limits
Arsenic	94.3	0.100 (ug/g)	80-115		Lead	95.2	0.250 (ug/g)	80-115
Mercury	90.9	0.0500 (ug/g)	80-115		Cadmium	92.0	0.100 (ug/g)	80-115

LCS(C25J012-BS2)			Extracted: 10/20/25 08:10			Analyzed: 10/21/25 12:40		
Analyte	% Recovery	LOQ	Recovery Limits	Notes	Analyte	% Recovery	LOQ	Recovery Limits
Arsenic	107	0.100 (ug/g)	80-115		Lead	155	0.250 (ug/g)	80-115 HIGH BIAS
Mercury	99.0	0.0500 (ug/g)	80-115		Cadmium	96.1	0.100 (ug/g)	80-115

LCS Dup(C25J012-BSD1)			Extracted: 10/20/25 08:10			Analyzed: 10/21/25 12:45		
Analyte	% Recovery	LOQ	Recovery Limits	Notes	Analyte	% Recovery	LOQ	Recovery Limits
Arsenic	97.5	0.100 (ug/g)	80-115		Lead	99.2	0.250 (ug/g)	80-115
Mercury	100	0.0500 (ug/g)	80-115		Cadmium	92.4	0.100 (ug/g)	80-115

LCS Dup(C25J012-BSD2)			Extracted: 10/20/25 08:10			Analyzed: 10/21/25 12:49		
Analyte	% Recovery	LOQ	Recovery Limits	Notes	Analyte	% Recovery	LOQ	Recovery Limits
Arsenic	93.5	0.100 (ug/g)	80-115		Lead	145	0.250 (ug/g)	80-115 HIGH BIAS
Mercury	99.1	0.0500 (ug/g)	80-115		Cadmium	89.8	0.100 (ug/g)	80-115

Batch: C25J013 - COR- PE/MY Combo



Brad Johnson
Laboratory Manager - 10/23/2025

Page 5 of 6

PREE Laboratories - South
545 SW 2nd St, #202, Corvallis, OR 97333
541-257-5002 / OLCC 010-10087092BDA / www.PREElab.com

Quality Control

Batch: C25J013 - COR- PE/MY Combo (Continued)

Blank(C25J013-BLK1)			Extracted: 10/20/25 08:12			Analyzed: 10/20/25 14:48			
Analyte	Result	LOQ	Recovery Limits	Notes	Analyte	Result	LOQ	Recovery Limits	Notes
Ochratoxin A	< LOQ	0.0100 (ppb)	< LOQ		Aflatoxin G2	< LOQ	0.0100 (ppb)	< LOQ	
Aflatoxin G1	< LOQ	0.0100 (ppb)	< LOQ		Aflatoxin B2	< LOQ	0.0100 (ppb)	< LOQ	
Aflatoxin B1	< LOQ	0.0100 (ppb)	< LOQ		Total Aflatoxins	< LOQ	0.0100 (ppb)	< LOQ	

LCS(C25J013-BS1)			Extracted: 10/20/25 08:12			Analyzed: 10/20/25 15:03			
Analyte	% Recovery	LOQ	Recovery Limits	Notes	Analyte	% Recovery	LOQ	Recovery Limits	Notes
Ochratoxin A	91.7	(ppb)	60-120		Aflatoxin G2	108	(ppb)	60-120	
Aflatoxin G1	107	(ppb)	60-120		Aflatoxin B2	103	(ppb)	60-120	
Aflatoxin B1	112	(ppb)	60-120						

LCS Dup(C25J013-BSD1)			Extracted: 10/20/25 08:12			Analyzed: 10/20/25 15:18			
Analyte	% Recovery	LOQ	Recovery Limits	Notes	Analyte	% Recovery	LOQ	Recovery Limits	Notes
Ochratoxin A	107	(ppb)	60-120		Aflatoxin G2	98.8	(ppb)	60-120	
Aflatoxin G1	96.8	(ppb)	60-120		Aflatoxin B2	97.7	(ppb)	60-120	
Aflatoxin B1	99.7	(ppb)	60-120						

Batch: C25J014 - LSOP #303 Cannabinoid Quantification

Blank(C25J014-BLK1)			Extracted: 10/23/25 10:28			Analyzed: 10/23/25 11:46			
Analyte	Result	LOQ	Recovery Limits	Notes	Analyte	Result	LOQ	Recovery Limits	Notes
CBDV-A	< LOQ	0.010 (%)	< LOQ		CBDV	< LOQ	0.010 (%)	< LOQ	
CBDA	< LOQ	0.010 (%)	< LOQ		CBGA	< LOQ	0.010 (%)	< LOQ	
CBG	< LOQ	0.010 (%)	< LOQ		CBD	< LOQ	0.010 (%)	< LOQ	
THCV	< LOQ	0.010 (%)	< LOQ		CBN	< LOQ	0.010 (%)	< LOQ	
delta 8-THC	< LOQ	0.010 (%)	< LOQ		delta 9-THC	< LOQ	0.010 (%)	< LOQ	
CBL	< LOQ	0.010 (%)	< LOQ		CBC	< LOQ	0.010 (%)	< LOQ	
THCA	< LOQ	0.010 (%)	< LOQ		Sum of tested Cannabinoids	< LOQ	0.010 (%)	< LOQ	

LCS(C25J014-BS1)			Extracted: 10/23/25 10:28			Analyzed: 10/23/25 12:02			
Analyte	% Recovery	LOQ	Recovery Limits	Notes	Analyte	% Recovery	LOQ	Recovery Limits	Notes
CBDA	104	0.010 (%)	90-110		CBD	98.1	0.010 (%)	90-110	
delta 8-THC	109	0.010 (%)	90-110		delta 9-THC	108	0.010 (%)	90-110	
THCA	92.7	0.010 (%)	90-110						

Notes and Definitions

Item	Definition
HIGH BIAS	High analyte recovery, yet no detection of that analyte in samples.



Brad Johnson
Laboratory Manager - 10/23/2025

Page 6 of 6